

Your drinking water is brought to your home by:

Spokane County Water District #3

SCWD#3 operates 7 independent water systems in Spokane County and is dedicated to making sure that every drop of water delivered to your tap is clean and safe for your family. Water District Board Meetings are held weekly on Wednesday mornings at 9:00 a.m. and public attendance is welcome.

Spokane County Water District #3
General Manager: Kelly Williquette
1225 N. Yardley Street Spokane, WA 99212-7001
(509) 536-0121 <https://SCWD3.org>

Purpose: This report is provided to all of our customers. It describes your drinking water quality for the period of January 1st to December 31st, 2025. Your water utility is committed to supplying safe water that meets or surpasses State and Federal Standards and achieves the highest standards of customer service. Electronic copies can be found on our website at <https://SCWD3.org/ccrs>. Paper copies are available at our main office or can be mailed to you upon request.

Water Source: Your drinking water is provided by **wells that pump water from underground sources** in and around your community. The water is recharged by precipitation in the area. These wells are closely monitored and maintained. The water is naturally filtered by the surface vegetation and the soils. However, natural systems can only do so much so we must all treat the groundwater with care to keep our drinking water clean for everyone to enjoy.

As water travels over land surfaces or through the ground, it dissolves naturally occurring minerals and radioactive material. Water can also pick up contaminants resulting from human activity or the presence of animals. That's why it is important to store and dispose of all chemicals properly, fix auto fluid leaks right away, try to reduce herbicide usage by using mulch or fabric covers to prevent weeds. Remember, don't pour anything on the ground that you wouldn't want to drink.

In order to ensure that tap water is safe to drink, Washington State and the Environment Protection Agency

(EPA) prescribe regulations which limit the amount of certain contaminants in water provided by public water systems.

SCWD#3 strives to be a good steward of the aquifer and your water system. Year-round water quality monitoring, replacing aging or leaking pipes and pumps, and planning for growth are just some of the responsibilities of the District.

Water Quality: The sources of drinking water (both tap water and bottled water) include rivers, lakes, streams, ponds, reservoirs, springs, and wells. As water travels over the surface of the land or through the ground, it dissolves naturally-occurring minerals and, in some cases, radioactive material, and can pick up substances resulting from the presence of animals or from human activity.

Contaminants that may be present in source water include:

- Microbial contaminants, such as viruses and bacteria, which may come from sewage treatment plants, septic systems, agricultural livestock operations, and wildlife.
- Inorganic contaminants, such as salts and metals, which can be naturally-occurring or result from urban stormwater runoff, industrial or domestic wastewater discharges, oil and gas production, mining, or farming.
- Pesticides and herbicides, which may come from a variety of sources such as agriculture, urban stormwater runoff, and residential uses.
- Organic chemical contaminants, including synthetic and volatile organic chemicals, which are byproducts of industrial processes and petroleum production, and can also come from gas stations, urban stormwater runoff, and septic systems.
- Radioactive contaminants, which can be naturally-occurring or be the result of oil and gas production and mining activities.

Summary: To ensure that your water is **clean and safe**, we test for contaminants all year long. The Department of Health and EPA prescribe regulations that limit the amount of certain contaminants in water provided by public water systems. The Food and Drug Administration (FDA) and the Washington Department of Agriculture regulations establish limits for contaminants in bottled water. **We are proud to report that your water meets or exceeds all state**

ENGLISH

This report contains important information about your drinking water. Have someone translate it for you, or speak with someone who understands it.

RUSSIAN

Этот отчет содержит важную информацию о вашей питьевой воде. Попросите кого-нибудь перевести это для вас или поговорите с кем-то, кто понимает это.

SPANISH

Este informe contiene información importante sobre su agua potable. Haga que alguien lo traduzca por usted o hable con alguien que lo entienda.

VIETNAMESE

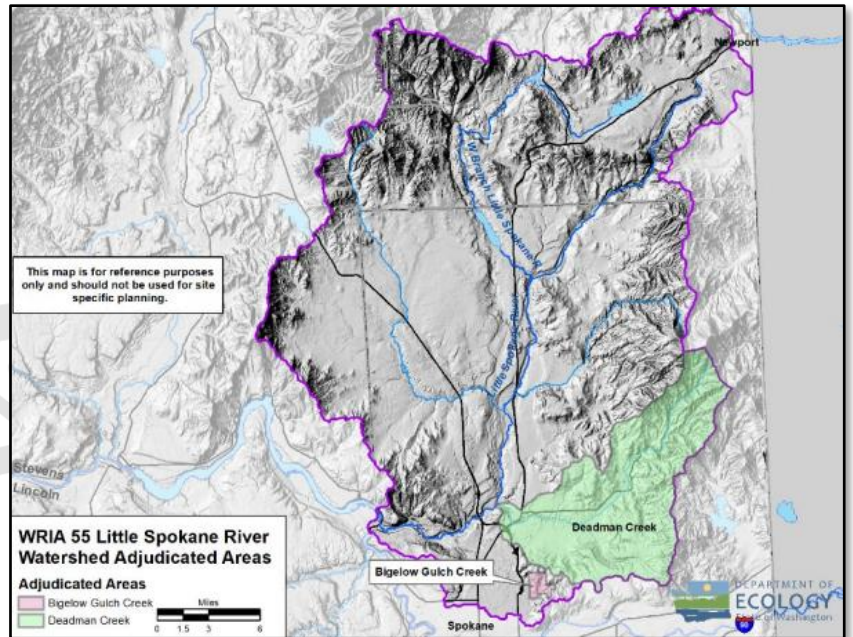
Báo cáo này chứa thông tin quan trọng về nước uống của bạn. Có ai đó dịch nó cho bạn, hoặc nói chuyện với ai đó hiểu nó.

WATER CONSERVATION AND EFFICIENCY

and federal regulations. While some contaminants were found in the water, the Environmental Protection Agency has determined that your water is safe at these levels for you and your family. Keep in mind that the presence of contaminants doesn't mean the water is unsafe. MCLs are set at very stringent levels. A person would have to drink 2 liters of water every day at the MCL level for a lifetime to have a one-in-a-million chance of having the described health effect. Health related standards are set by the Washington State Department of Health. See table on page 3 for your most recent water sampling results.

Important Note: Drinking water, including bottled water, may reasonably be expected to contain at least small amounts of some contaminants. The presence does not necessarily indicate that the water poses a health risk.

Some people may be more vulnerable to contaminants in drinking water than the general population. Immune-compromised persons such as persons with cancer undergoing chemotherapy, persons who have undergone organ transplants, people with HIV/AIDS or other immune system disorders, some elderly, and infants can be particularly at risk from infections. These people should seek advice about drinking water from their health providers. EPA/CDC guidelines on appropriate means to lessen the risk of infection by cryptosporidium and other microbiological contaminants or for more information about contaminants and potential health effects call the **Environmental Protection Agency's (EPA) Safe Drinking Water Hotline at 1-800-426-4791.**



Little Spokane Watershed

wateringnerds.org/tips-to-save-water or search **"water conservation tips"** in your web browser.

Water Use Efficiency: In addition to monitoring the quality of the water, SCWD#3 also works to make sure we are **using water efficiently**. The District set new water use efficiency goals in 2021 (found below) and report our progress annually.

DEMAND SIDE GOAL: Reduce Residential Usage by 1/2 GPD/ERU Each Year

The District's goal in 2025 was to reduce residential water use to 261 gallons per day per equivalent residential unit (GPD/ERU), but customers averaged 298 so we didn't achieve it. To promote outdoor water conservation, the District implemented the new rebate program mentioned above. We are also conducting a water rate study that's analyzing our overage charges per customer class which we may adjust to further encourage water conservation.

SUPPLY SIDE GOAL: Reduce the District's Average Distribution System Leakage Below 9.5% for the Next 6 Years

The District's 3-year average is currently 10.9% which is just shy of our goal, but down from 11.3% from last year. Last fall we contracted with a satellite leak detection company who scanned all of our water systems for leaks, which none were found in this system. We also had our source meters tested for accuracy. We will continue to be aggressive with leak detection and making timely repairs in hope of achieving our goal in 2026.



Water Conservation Rebates: In our efforts to promote water conservation and protection of the area's natural resources, we recently adopted a rebate program for the purchase of smart irrigation controllers for customers with in-ground irrigation systems. The rebate offers a credit on customer accounts, up to \$100.00, for the proof of purchase and use of **"EPA WaterSense"** labeled controllers within our water district. For more information or ways to apply or terms and conditions, visit our website at <https://scwd3.org/conservation-rebateprogram/> or contact our office for a copy of the rebate application.

For other information regarding ways to save water, visit our website at scwd3.org, follow us on Twitter, visit outdoor

SOURCE WATER TESTING (sample taken at the well)

CONTAMINANT	SAMPLE YEAR	UNITS	MCLG	MCL	HIGHEST DETECTION	POSSIBLE SOURCE
Inorganic Contaminants						
Nitrate	2025	ppm	10	10	ND	Runoff from Fertilizer Use; Leaching from Septic Tanks, Sewage; Erosion of Natural Deposits
Arsenic	2018	ppb	0	10	1.4	Erosion of Natural Deposits; Runoff from Orchards; Runoff from Glass and Electronics Production Wastes
Barium	2018	Ppm	2	2	0.09	Erosion of Natural Deposits; Discharge of Drilling Wastes; Discharge of Metal Refineries
Radioactive Contaminants						
Gross Alpha	2024	pCi/L	n/a	15	ND	Erosion of Natural Deposits
Radium 228	2024	pCi/L	n/a	5	ND	Erosion of Natural Deposits
Synthetic Organic Chemicals						
Various Chemicals	2025	ppb	Varies by chemical	Varies by chemical	ND	Varies by Chemical
Volatile Organic Chemicals						
Various Chemicals	2022	ppb	Varies by chemical	Varies by chemical	ND	Varies by Chemical

DISTRIBUTION SYSTEM TESTING (sample taken at the tap)

CONTAMINANT	SAMPLE YEAR	UNITS	MCLG	AL	90 TH PERCENTILE	POSSIBLE SOURCE
Inorganic Contaminants						
Lead	2025	ppb	0	15	2.7 0 homes out of 8 (0%) exceeded AL	Corrosion of the Household Plumbing Systems; Erosion of Natural Deposits
Copper	2025	ppb	1300	1300	90 0 homes out of 8 (0%) exceeded AL	Corrosion of the Household Plumbing Systems; Erosion of Natural Deposits
CONTAMINANT	SAMPLE YEAR	UNITS	MCLG	MCL	HIGHEST DETECTION	POSSIBLE SOURCE
Disinfection Byproducts						
Total Trihalomethanes	2023	ppb	0	80	ND	By-product of Chlorination
Haloacetic Acids	2023	ppb	0	60	ND	By-product of Chlorination
Microbial Contaminants						
E.coli Bacteria	2025		0	A routine sample and a repeat sample are total coliform positive, and one is also E.coli positive	ND	Human and Animal Fecal Waste

RADON is a naturally occurring radioactive gas that is common in the Spokane area. Exposure to excessive amounts of radon may increase cancer risk. Your drinking water, in most cases is a very small source of radon in indoor air. For local assistance concerning radon in your home, contact the Spokane County Health District at (509) 324-1560 ext. 5

LEAD: If present, elevated levels of lead can cause serious health problems, especially for pregnant women and young children. Lead in drinking water is primarily from materials and components associated with service lines and home plumbing. Spokane County Water District #3 is responsible for providing high quality drinking water, but cannot control the variety of materials used in plumbing components. When your water has been sitting for several hours, you can minimize the potential for lead exposure by flushing your tap for 30 seconds to 2 minutes before using water for drinking or cooking. If you are concerned about lead in your water, you may wish to have your water tested. Information on lead in drinking water, testing methods, and steps you can take to minimize exposure is available from EPA's Safe Drinking Water Hotline at **1-800-426-4791** or online at <http://www.epa.gov/safe-water/lead>

ABBREVIATIONS:

AL – Action Level – The concentration of a contaminant which, if exceeded, triggers treatment or other requirements which a water system must follow.
MCL – Maximum Contaminant Level – The highest level of a contaminant allowed in drinking water.
MCLG – Maximum Contaminant Level Goal – The level of a contaminant in drinking water below which there is no known or expected risk to health.
ND – Not Detected
NA – Not Applicable
pCi/L – Pico Curies per Liter – a unit of radioactivity
90th Percentile – 90% of at-risk homes had this concentration or less of lead/copper.
Ppm – Parts per million or milligrams per liter. About 4 drops in a 55-gallon barrel or 1 second out of 12 days would represent 1 ppm.
Ppb – Parts per billion or micrograms per liter. About 1 drop of water in a swimming pool or 1 second out of 32 years would represent 1 ppb.
Ppt – Parts per trillion or nanograms per liter. About 1 drop in 20 Olympic-sized swimming pools or 1 second out of 31,710 years would represent 1 ppb.